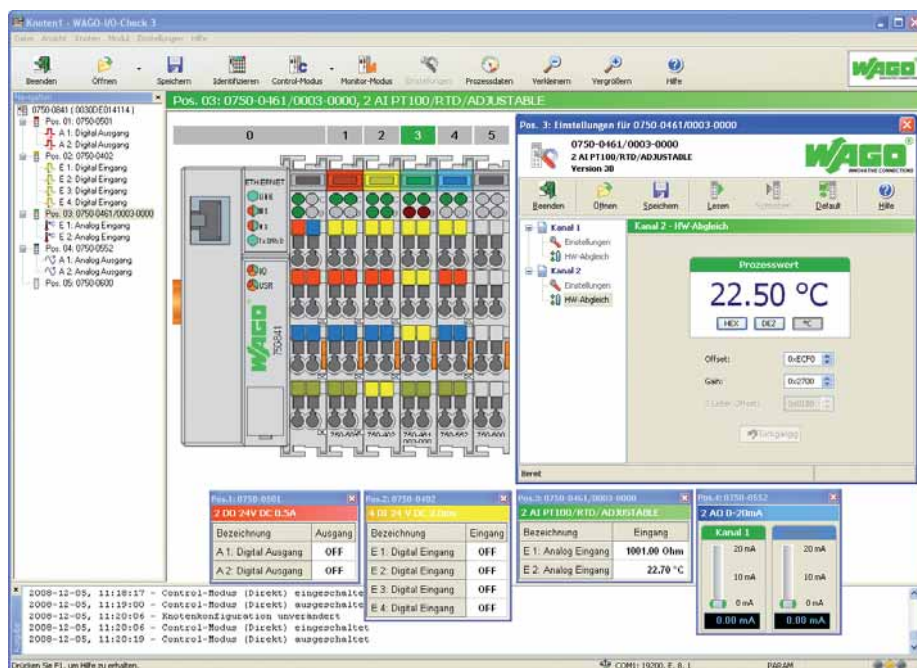


WAGO-I/O-CHECK

Commissioning tool for the WAGO-I/O-SYSTEM 750



WAGO-I/O-CHECK is an easy-to-use Windows application for operating and displaying a WAGO-I/O-SYSTEM 750 node without connecting the node to a fieldbus system. The software reads the configuration from the node and displays it as an on-screen graphic. The graphic can be printed together with a configuration list as documentation.

With WAGO-I/O-CHECK, it is possible to display and determine the process data of the bus modules. The field wiring, including all sensors and actuators, can thus be checked before startup.

Application-specific settings, such as the baud rate or sensor types, can be made with select interface, Pt100 and thermocouple modules.

For communicating between WAGO-I/O-CHECK and the node, the coupler must be connected at a PC's vacant serial or USB port using the communication cable supplied in the kit with the system.

Description	Item No.	Pack. Unit	Technical Data
WAGO-I/O-CHECK, RS-232 Kit	759-302	1	Supported operating systems Windows XP (SP3 or later), Windows 7
WAGO-I/O-CHECK, USB Kit	759-302/000-923	1	
WAGO-I/O-CHECK, CD-ROM	759-920	1	System requirements
			Processor
			1 GHz or higher
			32-bit (x86) or 64-bit (x64)
			Memory
			min. 1 GB RAM
			2 GB RAM or greater recommended
			Hard disk storage
			min. 150 MB
			CD-ROM
			required
			Graphics resolution
			min. 1024 x 786
			1280 x 1024 or higher recommended
			Mouse
			required
			Delivery type
			RS-232 Kit:
			CD-ROM with software and serial
			750-920 Communication Cable
			USB Kit:
			CD-ROM with software and USB
			communication cable 750-923
			CD-ROM:
			CD-ROM with software, no
			communication cable

Windows® is a registered trademark of Microsoft Corporation.